



MAX MULTI-WALL PARTS ORDER FORM

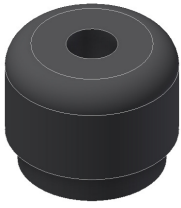
Order Date:	Date Required:	
Bill To:	Ship To:	Contact Person:
		Contact Email:
Highmark Job #:	Shipping Method:	Contact Phone:
Customer PO #:	Special Instructions:	

QTY	PART #	PART DESCRIPTION	UNIT PRICE	TOTAL
	50-10	MAX Foot		
	50-30	8" ExZact Lock for MAX		
	50-50	13" Ambidex Lockrail - Green		
	50-60	13" Ambidex Lockrail - Black		
	50-95	MAX Base Plate		
	50-100	MAX Base Plate "L" Bracket		
	50-120	Lockset Adaptor - Finished		
	50-130	Wall to Deck Cam Lock		
	50-140	MAX Door Lock Set with Key		
	50-290	Lockset (Doorknob) Key		
	50-320	10" Shelf Bracket - Standard		
	50-420	Monitor Support Bracket for MAX - Raw		
	50-400	Stem Light Assembly with Light & Mount		
	50-410	Stem Light Power Supply		
	50-480	3/8-16 Quarter Turn T-Nut		
	50-525	MAX Wall to Curb Adapter		
	50-560	MAX Black Plastic Wall Pins for Ambidex		
	50-661	Monty Assembly		
	60-10	MAX Extreme Pin		
	30-20	ExZact Extension Pin		
	30-30	ExZact Under Beam Wall Pin		
	100-220	Prizm EC-24V-EQUI-6500-12-1055 - EQUIFLUX 1055 LED Display Graphics Light - (12") w/ Mounting Brackets		
	100-230	Prizm Plug-In Adapter, EC-24V96WADPTR-55X21 - 24V, Black, 96W		
	100-240	Prizm Connector Cable - 4', EC-EQUI-DC-CON-48 - EQUIFLUX Molex to DC		
	100-245	Prizm Extension Cable - 4', EC-EQUI-EC-EQUI-48 - EQUIFLUX Molex to Molex		

Please send all parts orders to Jennifer Lehrman - jllehrman@highmarktech.com. **PURCHASE TOTAL:**

General parts orders can be processed in 1-2 business days, but are subject to change based on in-stock availability and quantity. When an order is placed, you'll be notified when a pick-up or shipment can be scheduled via the order confirmation.

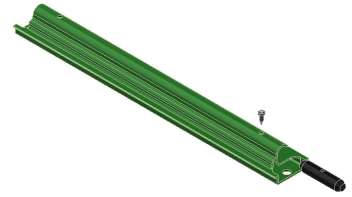
MAX Multi-Wall Parts



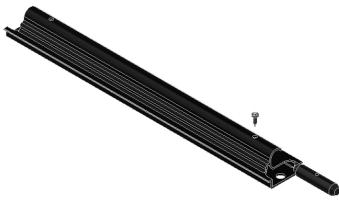
MAX Foot
Part # 50-10



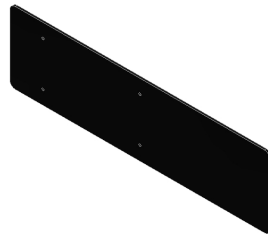
8" ExZact Lock for MAX
Part # 50-30



13" Ambidex Lockrail - Green
Part # 50-50



13" Ambidex Lockrail - Black
Part # 50-60



MAX Base Plate
Part # 50-95



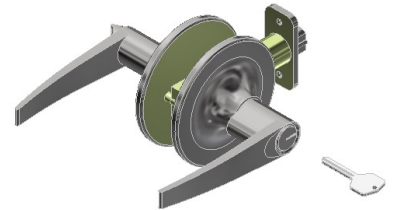
MAX Base Plate "L" Bracket
Part # 50-100



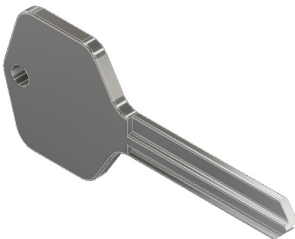
Lockset Adaptor - Finished
Part # 50-120



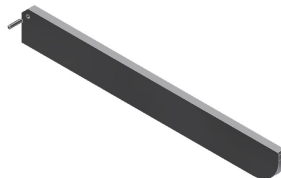
Wall to Deck Cam Lock
Part # 50-130



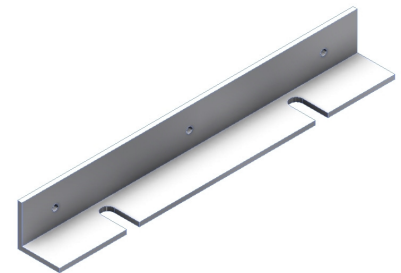
MAX Door Lock Set with Key
Part # 50-140



Lockset (Doorknob) Key
Part # 50-290



10" Shelf Bracket - Standard
Part # 50-320



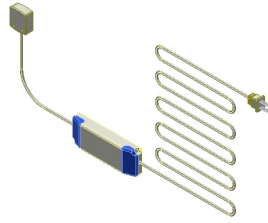
Monitor Support Bracket for MAX - Raw
Part # 50-420

MAX Multi-Wall Parts



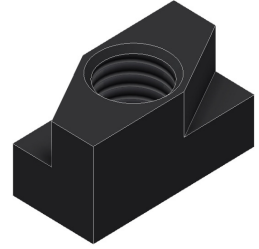
Stem Light Assembly - Light & Mount

Part # 50-400



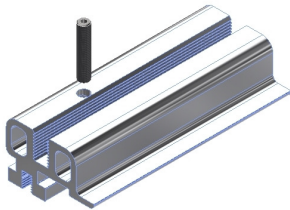
Stem Light Power Supply

Part # 50-410



3/8-16 Quarter Turn T-Nut

Part # 50-480



MAX Wall to Curb Adapter

Part # 50-525



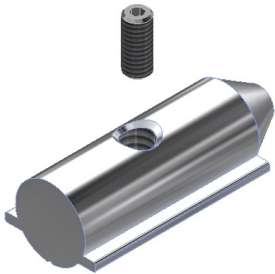
MAX Black Plastic Wall Pins for Ambidex

Part # 50-560



Monty Assembly

Part # 50-661



MAX Extreme Pin

Part # 60-10



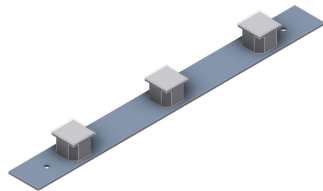
ExZact Extension Pin

Part # 30-20



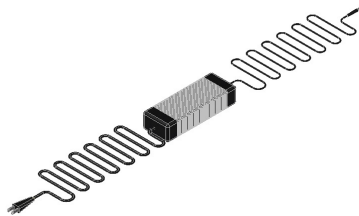
ExZact Under Beam Wall Pin

Part # 30-30



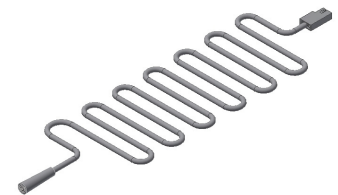
Prizm Display Graphics Light (12") w/ Mounting Brackets

Part # 100-220



Prizm Plug-In Adapter, EC-24V, Black, 96W

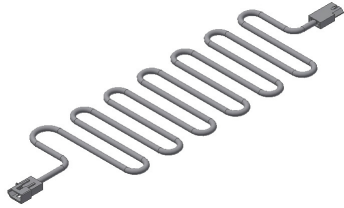
Part # 100-230



Prizm Connector Cable - 4' Molex to DC

Part # 100-240

MAX Multi-Wall Parts



Prizm Connector Cable - 4' Molex to Molex

Part # 100-245